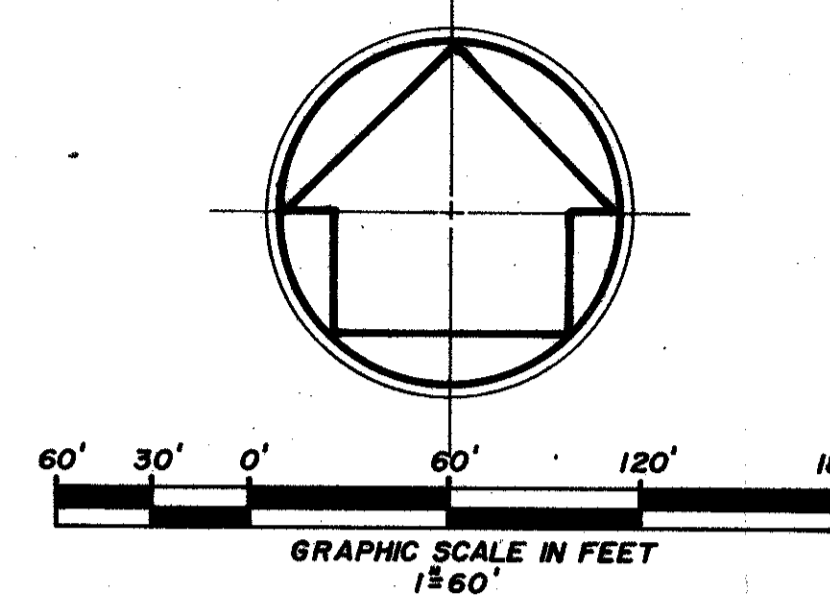
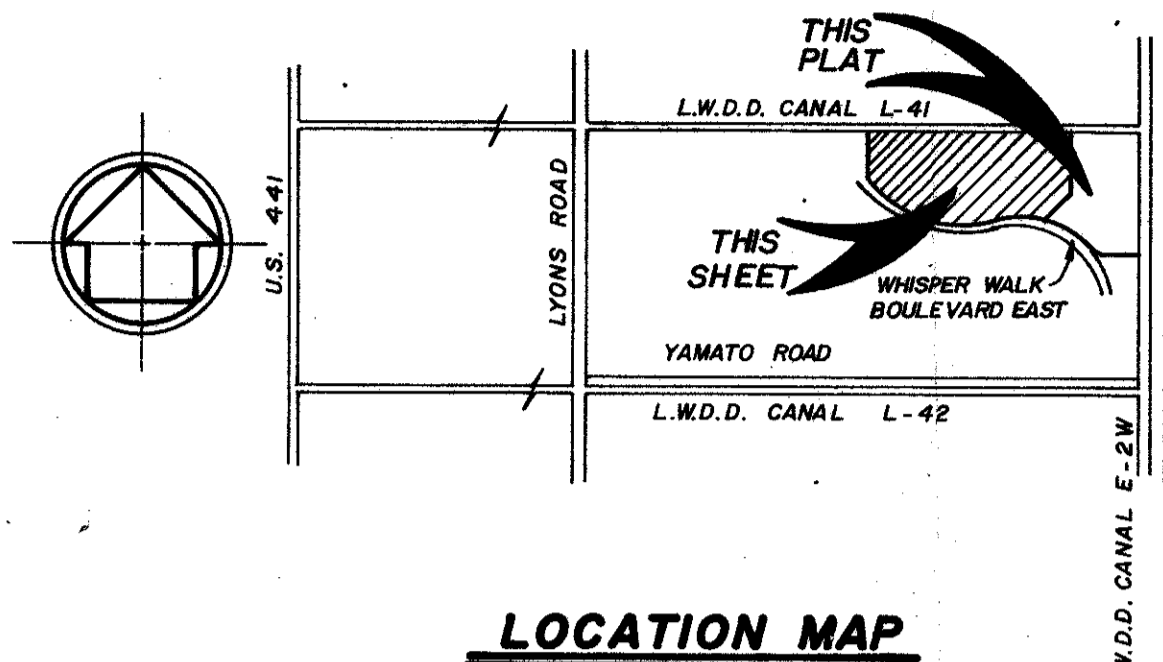


# WHISPER WALK SECTION "D"

17

SITUATE IN SECTION 5, TOWNSHIP 47 SOUTH,  
RANGE 42 EAST, PALM BEACH COUNTY, FLORIDA.  
BEING A REPLAT OF A PORTION OF TRACT A OF  
THE BOUNDARY PLAT OF WHISPER WALK, A P.U.D.  
(PB. 43, PG. 189-191)

PREPARED BY:  
**CRAIG A. SMITH & ASSOCIATES**  
CONSULTING ENGINEERS & SURVEYOR'S  
1000 WEST McNAB ROAD  
POMPANO BEACH, FLORIDA, 33069  
BY: FREDERICK E. CONROD, III, P.L.S. No. 2816  
JULY 1987



MATCH LINE  
SEE SHEET 3 OF 3 SHEETS

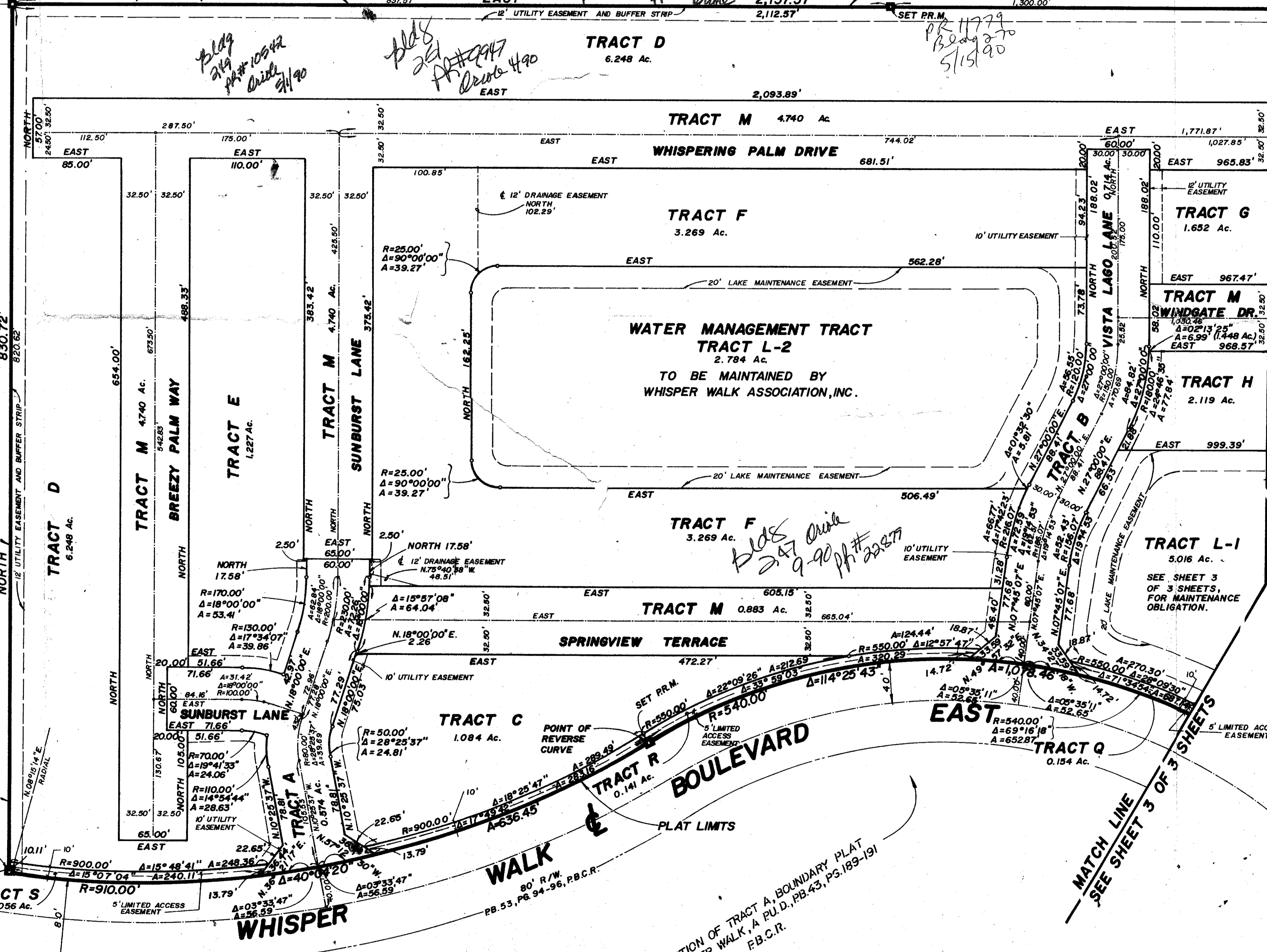
STATE OF FLORIDA } S.S.  
COUNTY OF PALM BEACH }  
THIS PLAT WAS FILED FOR  
RECORD AT \_\_\_\_\_ THIS  
DAY OF \_\_\_\_\_, 1988 A.D.,  
AND DULY RECORDED IN PLAT BOOK  
No. \_\_\_\_\_ ON PAGE  
AND  
JOHN B. DUNKLE, CLERK  
BY: \_\_\_\_\_, D.C.

LOCATION MAP

N.T.S.  
SET P.R.M.

SOUTH R/W LINE OF L.W.D.D. L-41 CANAL  
P.B. 43, PG. 189-191, P.B.C.R.

837.57' EAST 2,137.57' PLAT LIMITS  
2,112.57' SET P.R.M. 1,300.00'



- NOTES**
- BEARINGS SHOWN HEREON REFER TO THE EAST LINE OF THE BOUNDARY PLAT OF WHISPER WALK, A P.U.D., PB. 43, PG. 189-191, P.B.C.R.
  - PR.M. INDICATES PERMANENT REFERENCE MONUMENT.
  - PC.P. INDICATES PERMANENT CONTROL POINT.
  - NO BUILDINGS OR ANY KIND OF CONSTRUCTION SHALL BE PLACED ON UTILITY OR DRAINAGE EASEMENTS.
  - NO STRUCTURES, TREES OR SHRUBS SHALL BE PLACED ON DRAINAGE EASEMENTS, LAKE MAINTENANCE EASEMENTS OR UTILITY EASEMENTS FOR WATER AND SEWER.
  - APPROVAL OF LANDSCAPING ON UTILITY EASEMENTS OTHER THAN WATER OR SEWER SHALL BE ONLY WITH APPROVAL OF ALL UTILITIES OCCUPYING SAME.
  - WHERE UTILITY AND DRAINAGE EASEMENTS CROSS, DRAINAGE EASEMENTS SHALL TAKE PRECEDENCE.
  - IMPROVEMENTS NOT SHOWN.
  - THERE MAY BE ADDITIONAL RESTRICTIONS THAT ARE NOT RECORDED ON THIS PLAT, THAT MAY BE FOUND IN THE PUBLIC RECORDS OF THE COUNTY.

TAZ 770  
SUBDIVISION: Whisper Walk  
BOOK: 62  
PAGE: 53  
PUB. DATE: 3/24/87  
RS 80-229  
33434

Bldg 253 PR 92-19575  
Bldg 230 PR 92-19573  
Bldg PR 91-9251  
245  
4/91 drive  
Bldg 241  
PR 91-2102  
301 259  
92-438  
Bldg 241 PR 92-24922

0339-005

"0" School see att 1  
letter 3/24/91

Ref. 80-229

## WHISPER WALK SECTION "D" 62/17